



HEALTH ASSESSMENT & UPDATE REFERRAL IN HOSPITAL

PeKa
B40



CONTENT

1. Health Assessment (In-Patient Screening)

- a) Criteria for Health Assessment in MOH Hospital
- b) Health Assessment Flow for HA/CCTI
- c) Checking Eligibility
- d) Beneficiary Consent
- e) Update Beneficiary's Information
- f) Health Assessment Components
- g) Laboratory Investigations
- h) Management and Referral
- i) Screening Summary

2. Receiving Referrals

- a) Justification
- b) Updating Referral Workflow

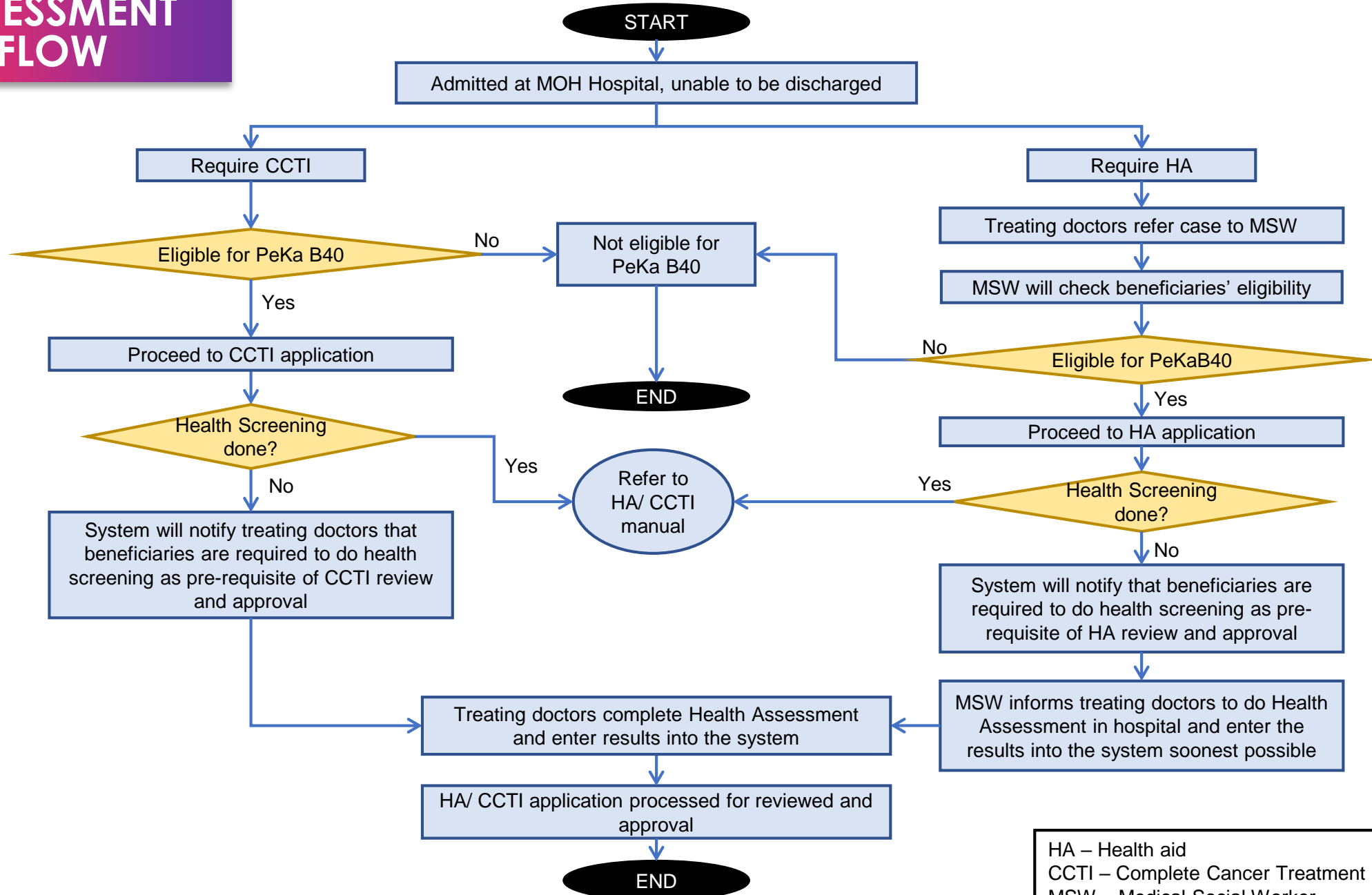
HEALTH ASSESSMENT IN HOSPITAL



CRITERIA FOR HEALTH ASSESSMENT

- All following criteria must be fulfilled:
 - a) Beneficiaries are eligible for PeKa B40 Scheme
 - b) Have not undergone Health Screening at GP/KK
 - c) Require HA or CCTI benefit while admitted at MOH Hospital
 - d) Unable to be discharged from hospital**
- Application for HA and/or CCTI can be done concurrently with Health Assessment. However, HA/CCTI application will only be processed after the results of Health Assessment including laboratory results are uploaded into BMS.

HEALTH ASSESSMENT FLOW



HA – Health aid
 CCTI – Complete Cancer Treatment Incentive
 MSW – Medical Social Worker

HEALTH ASSESSMENT FLOW FOR HA

- Beneficiary who requires HA will be referred by treating doctor to Medical Social Worker (MSW). MSW will check beneficiary's eligibility.
- If beneficiary is eligible for PeKa B₄₀, MSW can proceed to HA online application.
- If screening not done before, there will be a notification that beneficiary has not done Health Assessment yet.
- The status of HA application will be 'pending for review' until health assessment completed.

HEALTH ASSESSMENT FLOW FOR HA

- MSW will inform the treating doctor to do the Health Assessment in order for the HA application to be reviewed.
- Once the treating doctor has completed the Health Assessment and entered the results into the system, the application will be reviewed by ProtectHealth.
- Turn-Around-Time (TAT) for processing of HA approval is 5 working days from the date of completion of Health Assessment in system.

HEALTH ASSESSMENT FLOW FOR CCTI

- Treating doctor will check eligibility of those requiring CCTI.
- If beneficiary is eligible for PeKa B₄₀, treating doctor can proceed to CCTI online application
- If screening not done before, there will be a notification that beneficiary has not done Health Assessment yet.
- The status of CCTI application will be 'pending for review' until health assessment completed.

HEALTH ASSESSMENT FLOW FOR CCTI

- Once the treating doctor has completed the Health Assessment and entered the results into the system, the application will be reviewed by ProtectHealth.
- Turn-Around-Time (TAT) for processing of CCTI approval is 5 working days from the date of completion of Health Assessment in system.

BENEFICIARY CONSENT

- Beneficiaries are required to read and understand the Personal Data Protection Act (PDPA) Consent Form.
- A scanned copy of form must be uploaded in the system.
- The original copy of PDPA Consent Form should be kept at the hospital.



PRIVACY POLICY AND AUTHORIZATION TO RELEASE INFORMATION
(Collection, Recording, Storage and Retention of Personal Information)

PRIVACY POLICY

ProtectHealth Corporation Sdn. Bhd. (known as "ProtectHealth") in compliance to the Personal Data Protection Act (hereinafter referred to as "PDPA") is committed to protect the privacy, confidentiality and security of all Personal Data (including sensitive information) it is entrusted with.

INFORMATION THAT WE PROCESS

Your personal information may include your title, NRIC number, contact details, occupation, age, gender, marital status, weight, height, race, religion, family information, banking account details, medical history, and other necessary personal information.

WHY WE PROCESS YOUR PERSONAL DATA

Your personal data and information (including sensitive information) may be used for the following. It may also be used for other relevant purposes not listed below: -

- 1) To better understand all of your healthcare needs;
- 2) To provide services to you under *Skim Peduli Kesihatan untuk Kumpulan B40* (known as "PeKa B40");
- 3) To directly communicate with you about/on our wellness programme;
- 4) For administration, scheme monitoring and evaluation purposes;
- 5) For security and fraud prevention purposes;

DISCLOSURE OF PERSONAL DATA

ProtectHealth will take reasonable steps to protect your Personal Data against unauthorised disclosure. Unless provided under any other laws, your Personal Data may be disclosed only: -

- 1) for the purposes listed above;
- 2) to the following entities or parties:
 - a) registered General Practitioners, Primary Care Clinics, Hospitals, Laboratories and/or other relevant Healthcare Facilities; and
 - b) the Ministry of Health.

CONFLICT

In the event of any inconsistency between the English version and the Bahasa Malaysia version of this Policy, the English version shall prevail over the Bahasa Malaysia version.

DECLARATION AND CONSENT

By providing your personal data to us, you declare that you have read, understood and accepted the statements and terms herein.

Thank you.

The Management, ProtectHealth Corporation Sdn Bhd

CONSENT AND DECLARATION FOR PERSONAL DATA

1. CONSENT CLAUSE

By signing and submitting this form, I am declaring that I understand and agree to the terms of the Privacy Policy of ProtectHealth Corporation Sdn Bhd ("ProtectHealth"). I voluntarily consent and authorise ProtectHealth to collect, administer, manage, and process all my personal data (including sensitive personal data, collectively known as "Personal Data") to be used only for the purposes related to *Skim Peduli Kesihatan untuk Kumpulan B40* (known as "PeKa B40") including the following: -

- Health Screening;
- Health Aid;
- Completed Cancer Treatment Incentive;
- Transport Incentive;
- Medical Audit and Quality;
- Health Profiling;
- Data analytics; and
- Monitoring and Evaluation.

collectively known as "the Purposes".

1.1 I also consent ProtectHealth to: -

- a. collect, administer, manage, and process my Personal Data (including sensitive personal data) obtained directly or indirectly from selected third party, registered General Practitioners, Clinics, Hospitals, Laboratories, other relevant Healthcare Facilities and/or the Ministry of Health Malaysia;
- b. disclose my personal data to the Ministry of Health Malaysia, when necessary.

1.2 For avoidance of doubt, Personal Data includes all data defined within the Personal Data Protection Act 2010 ("PDPA").

2. DECLARATION

- 2.1 I acknowledge and confirm that I have read and understand the Privacy Policy of ProtectHealth.
- 2.2 I confirm and declare that my personal data and information disclosed to ProtectHealth are true and correct to the best of my knowledge.
- 2.3 I undertake to inform ProtectHealth immediately on any changes of my personal data.

Date: _____

Signature
Name:
NRIC No:

UPDATING BENEFICIARY'S INFORMATION

- Purposes of updating information:
 - a) For Hospital or ProtectHealth to contact beneficiary
 - b) Risk profiling
 - c) Updated home address will be used to calculate PeKa B40 Transport Incentive (Benefit 4) if applicable

HEALTH ASSESSMENT COMPONENTS

1. Structured Medical History Taking

- Focuses on Non-Communicable Diseases (NCD) and risk assessment.
- To ease history taking process, the format is in a checklist manner. However, doctor has to indicate the details when there are abnormalities .



HEALTH ASSESSMENT COMPONENTS

2. Screening Symptoms for Mental Health

- Patient Health (PHQ-9) and Generalised Anxiety Disorder (GAD)-7 Questionnaire
- It is a self-administered four-point Likert scale of frequency or severity of the beneficiaries' experiences over the last 2 weeks.
- Questionnaire results has to be entered in BMS to auto-populate final score.
- The score of ≥ 10 for PHQ-9 and/or GAD-7 is indicated for further intervention.



HEALTH ASSESSMENT COMPONENTS

3. Physical Examination

- It is in a checklist format
 - However, doctor has to key in the details when there are abnormalities.

Laboratory Investigations

- The treating doctor will use existing hospital pathology services and existing hospital laboratory request form.
- Laboratory results must be reviewed and subsequently provisional diagnosis must be entered into BMS.
- Laboratory results must be uploaded by the treating doctor into BMS.



Laboratory Investigations

- Ensure adequate blood and urine specimens taken for:
 - a) Full blood count (FBC);
 - b) Glycosylated hemoglobin A₁C (HbA₁C);
 - c) Random lipid profile;
 - d) Renal profile (RP) with (autocalculated eGFR);
 - e) Urine Biochemistry.



MANAGEMENT & REFERRAL

- Following health assessment , consultation will be given to beneficiary and referral will be made if indicated.
- Doctor can print screening summary to be given to beneficiary.



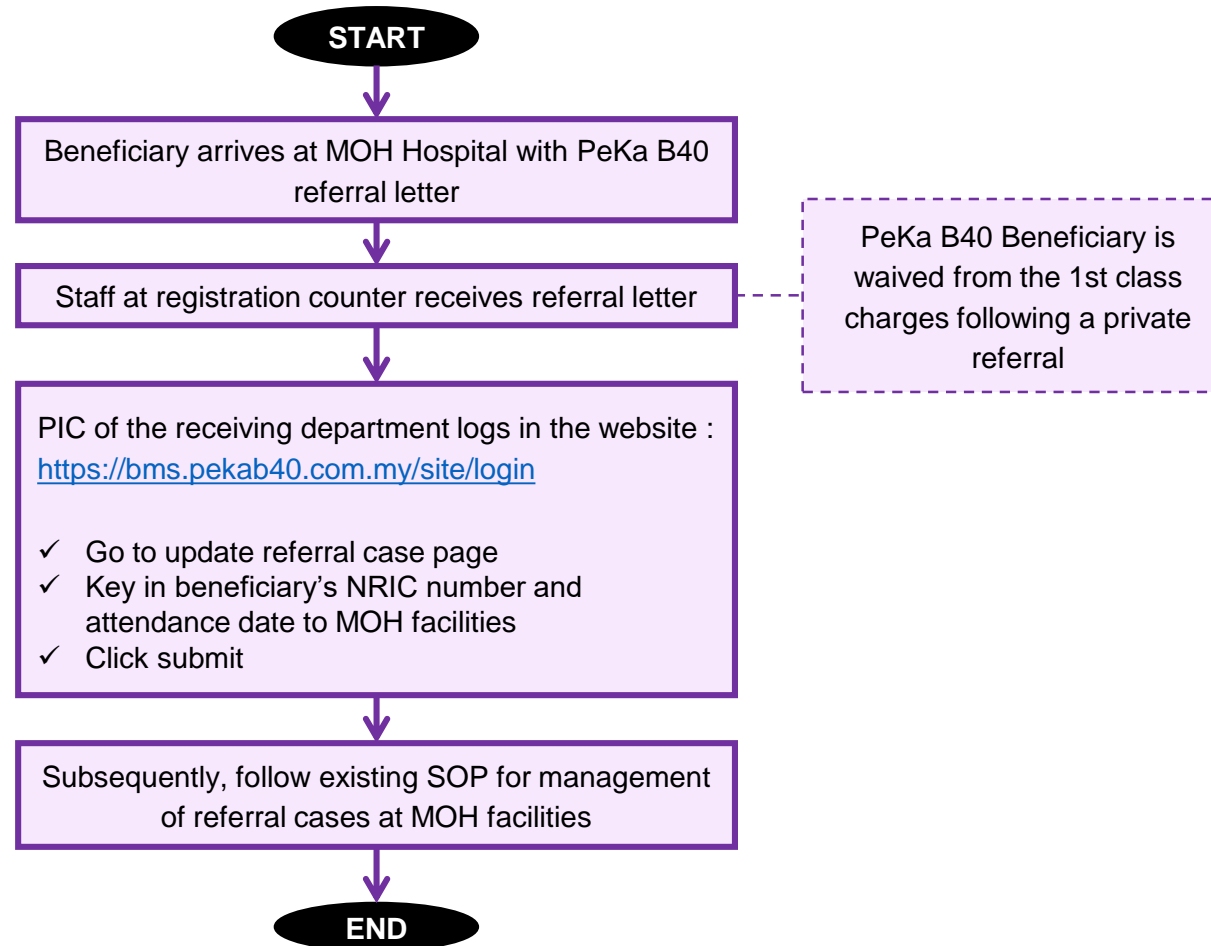
UPDATING REFERRAL CASES



UPDATING REFERRAL

- Following Health Screening at GP / KK, there will be some cases indicated for referral to MOH Hospital.
- PeKa B40 beneficiaries referred from PeKa B40 Health Screening are identified by PeKa B40 Referral Letter .
- PeKa B40 referrals must be monitored to enable MOH to take appropriate measures in relation to the increased workload and capturing beneficiaries who default referral.
- Updating of referral cases should be done in a timely manner, preferably straight away into BMS. It should be done regularly, at least on a weekly basis.
- PIC of the department must ensure all referrals are updated in BMS.

UPDATING REFERRAL WORKFLOW





“Lebih PeKa, Lebih Cakna”

TERIMA KASIH